

- These spools are suitable for 'Super Enameled Copper Strips' & 'Low Gauge Cables'.

PP : Polypropylene

ABS : Acrylonitrile Butadiene Styrene

**Tolerance:** All measures, weights and loads as indicated in this catalogue are approximate figures. Tolerances and deviations as customary in this trade reserved.

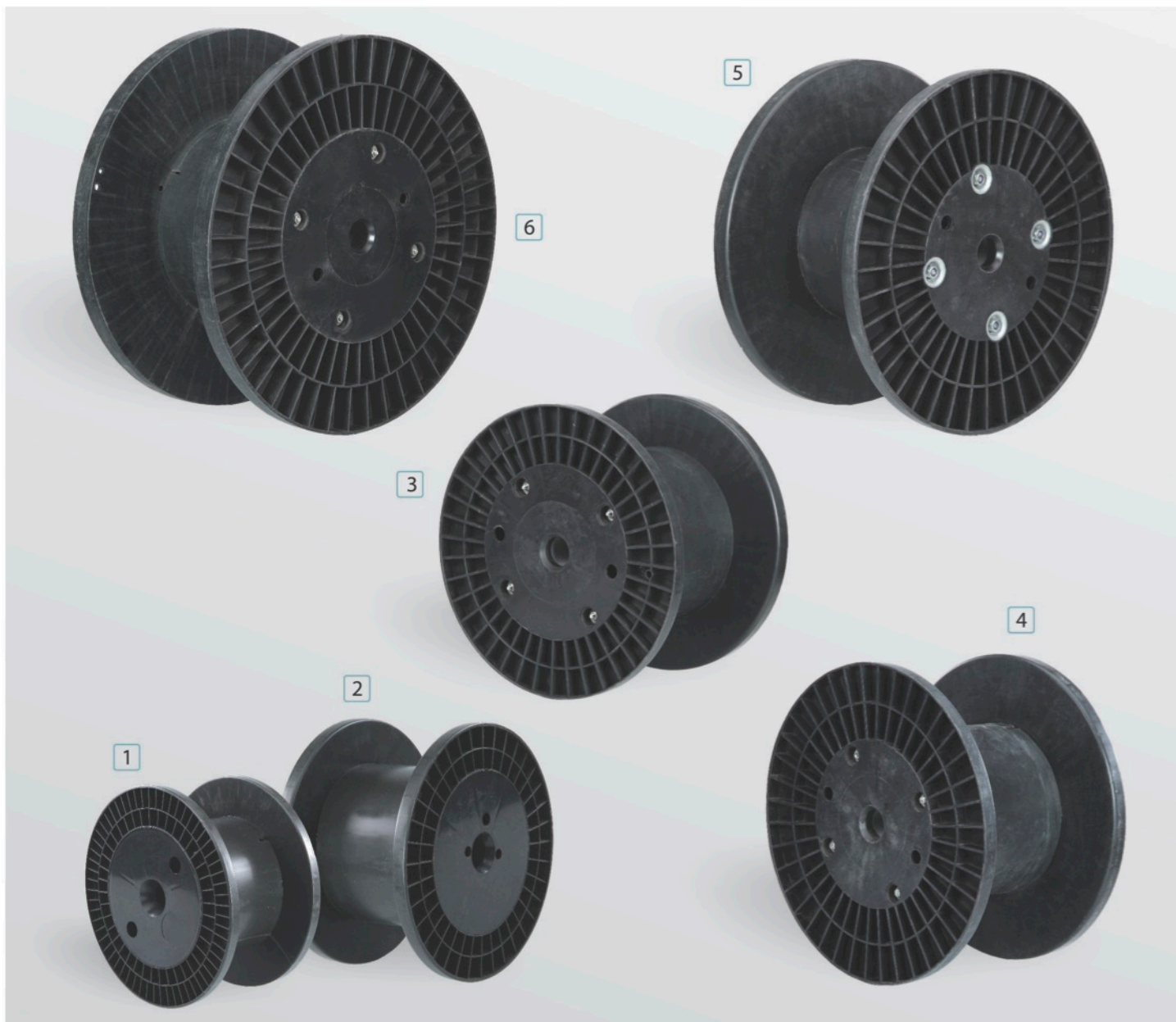
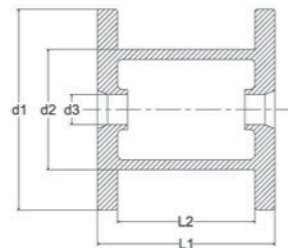


Image No.	Spool Code	Flange Dia. d1	Barrel Dia. d2	Bore Dia. d3	Traverse Length L2	Overall Length L1	Possible Material	Volume (cm <sup>3</sup> )
1	310 mm	310	200	36	160	200	ABS/PP	7053
2	355 mm	355	224	36	160	200	ABS/PP	9535
3	400 mm	400	250/300	40/56/127	230	280	ABS/PP	17620/12650
4	450 mm	450	250/300	40/56/127	230	290	ABS/PP	25300/20330
5	500 mm	500	250/300	40/56/127	230	290	ABS/PP	33884/28914
6	560 mm	560	300	40/56/127	230	300	ABS/PP	40408

**Note:** All dimensions are in mm

**Attention:** The spools should not be stored in direct sunlight because heat built up can lead to deformation of the plastic material.